



### Assembly Instructions

..... **Mountain fold** (dotted line)  
\*Make a mountain fold.

- - - - - **Valley fold**  
(dashed and dotted line)  
\*Make a valley fold.

▲ **Black triangle**  
Glue here

——— **Scissors line** (solid line)  
\*Cut along the line.

——— **Cut in line** (solid line)  
\*Make a cut.

△ **White triangle**  
Glue the back



**You will need**  
scissors, paste, a used ballpoint pen (tracing along the fold lines makes them easier to fold)



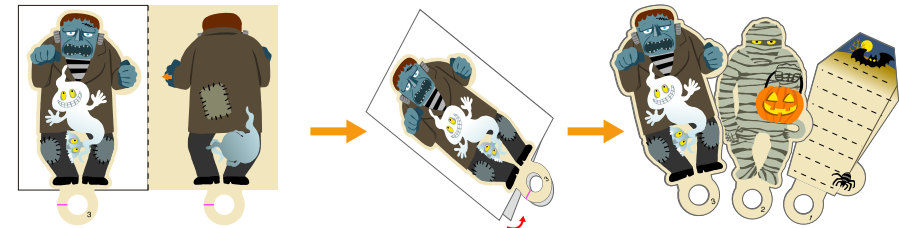
**Caution:** Glue, scissors, and other tools may be dangerous to young children so be sure to keep them out of the reach of young children.

**1** Cut out the parts and fold them along the fold lines on each.



\*When cutting out the hole for the pivot, it will be easier if you cut along the slot right through the circle, then cut the two halves of the circle out separately.

**2** Fold Frankenstein, the Mummy, and the card in half, glue them and cut them out according to their shapes.



**3** Attach part A to the back side of the round part of the Coffin (back side). Then, attach part B to the back side of the round part of the Coffin (Dracula) and attach part C to the hand glue tab. Attach Coffin (front side) and Coffin (back side) to Coffin (Dracula).



\*When attaching part B, make sure that the cut-in lines do not overlap each other (see diagram).

**4** Attach the pivot on part A, insert the cards onto it in the order from 1 to 4, and open them up. Then, attach the pivot lid. Use Dracula's hand to close the front cover, and you're done!



\*See the pattern sheets for a more detailed explanation of the pivot.

● Coffin (front)



● Coffin (Dracula)



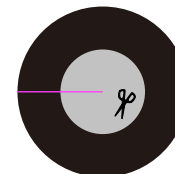
● Coffin (back)



● Part A



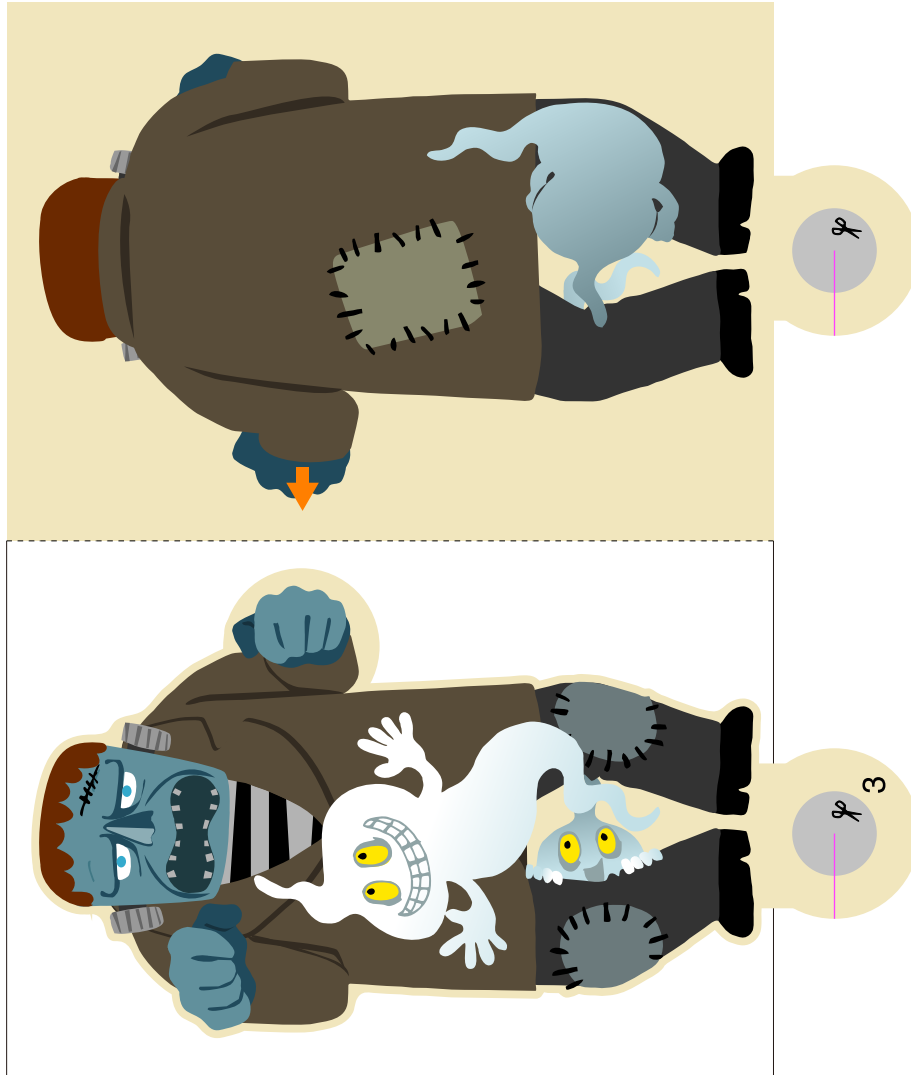
● Part B



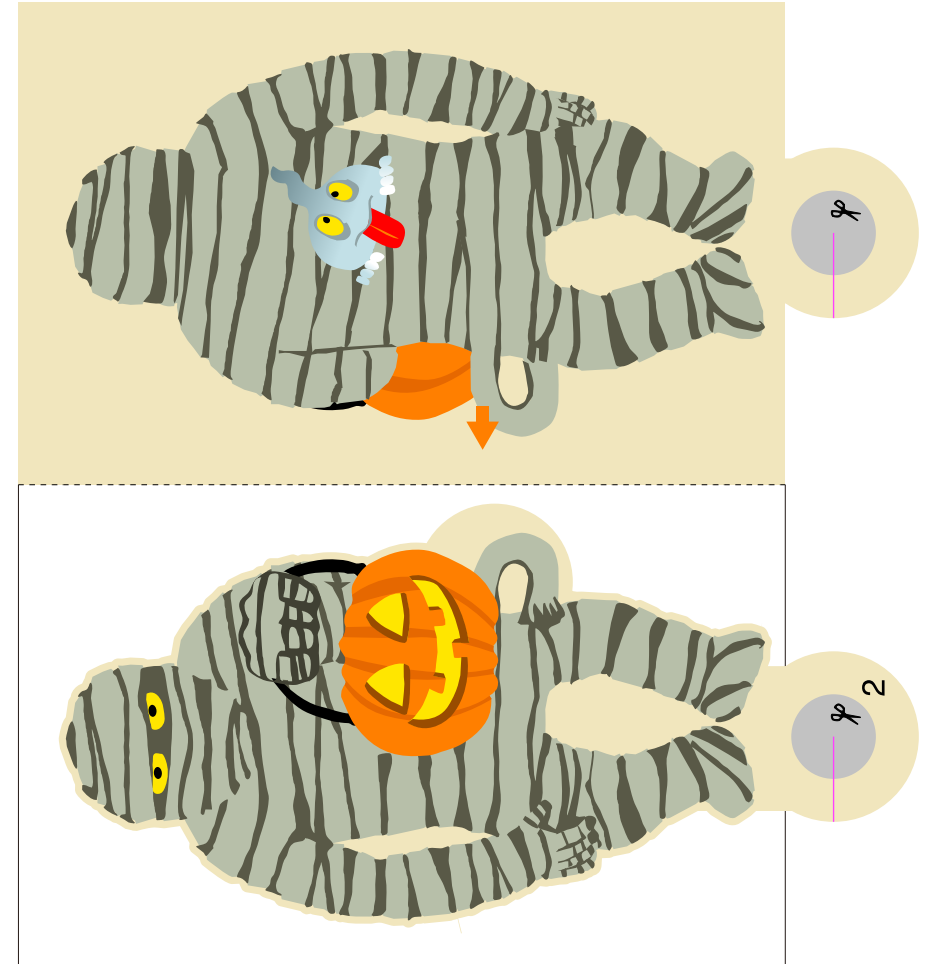
● Part C



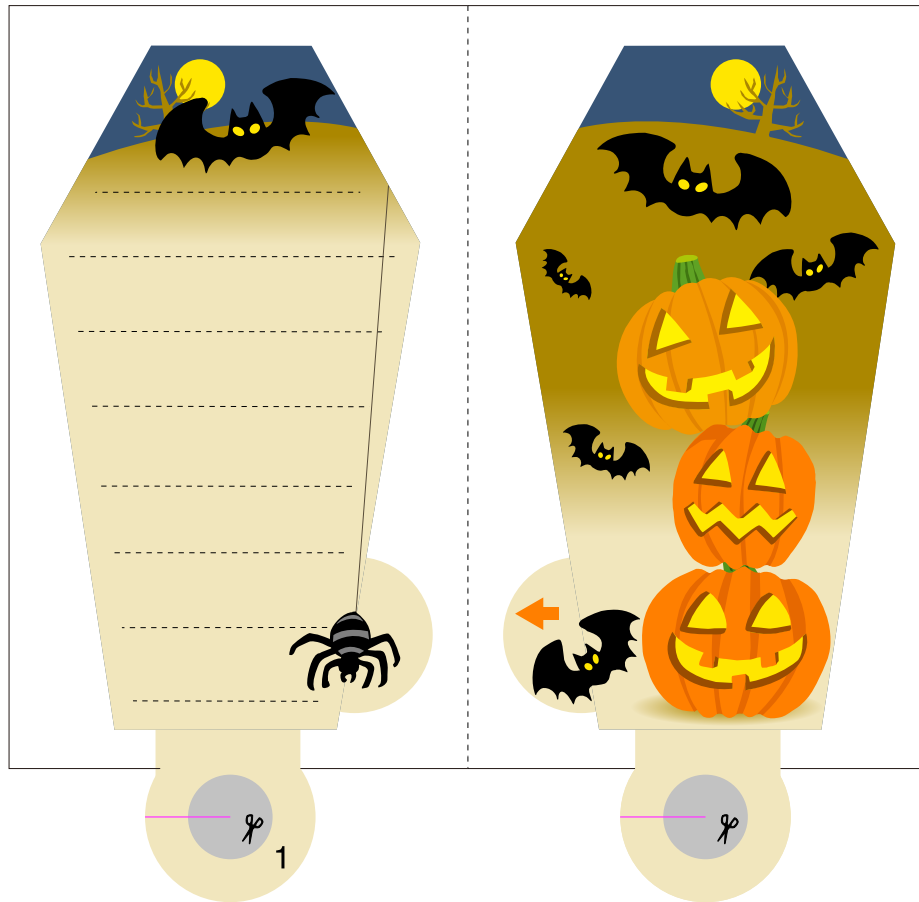
● Card (Frankenstein)



● Card (mummy)



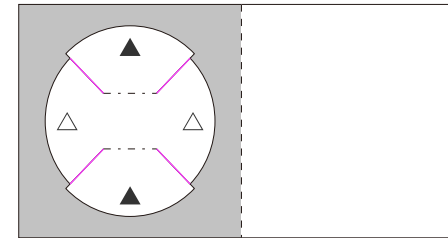
● Card (message)



● Stickers



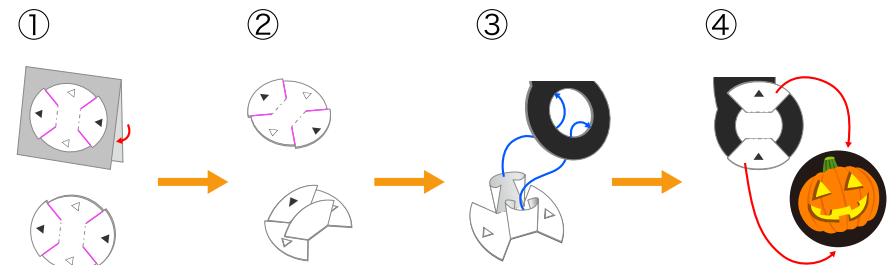
● Pivot



● Pivot lid

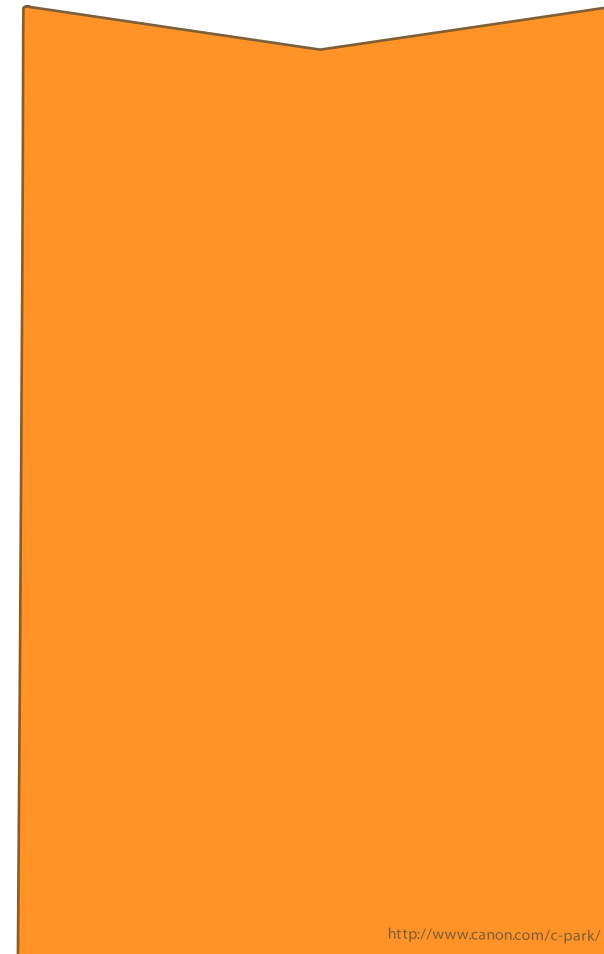
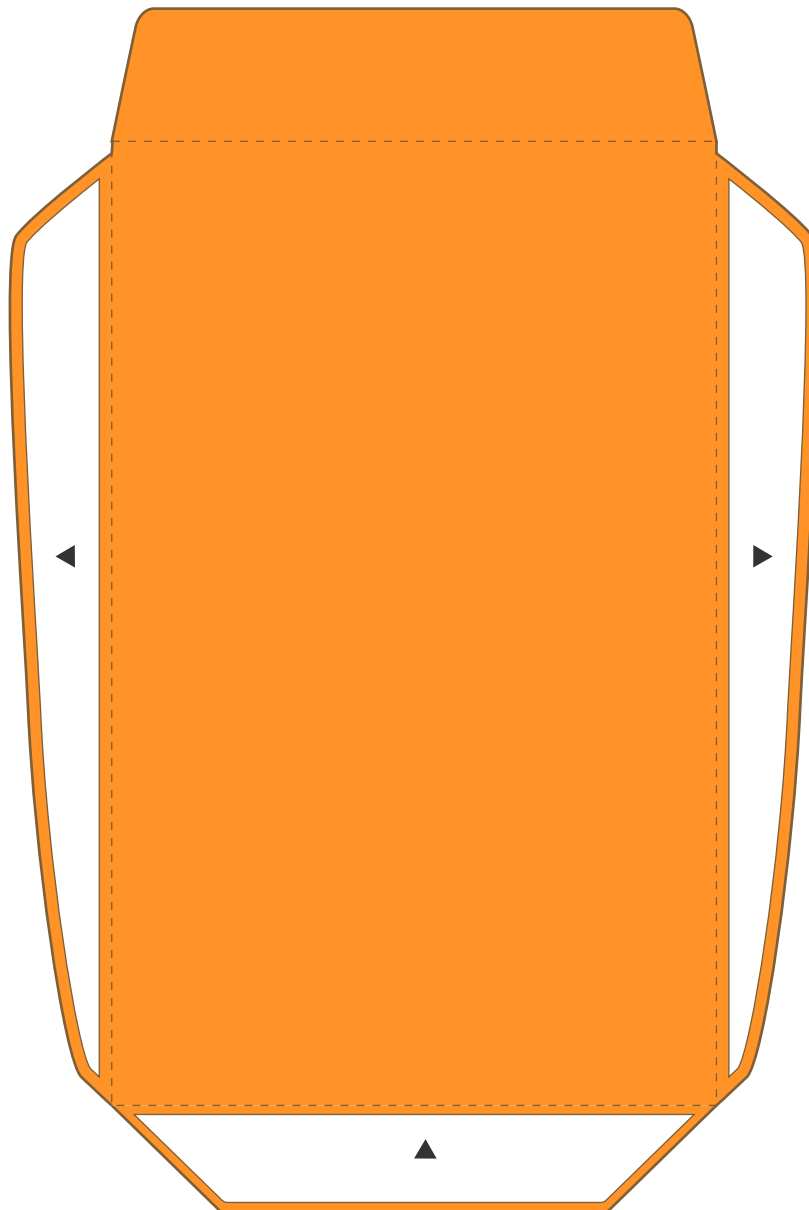


How to use the pivot



- 1: Fold in half and glue, then cut out according to its shape.
- 2: Fold the bigger fan shape along the fold lines.
- 3: Curve the parts to be inserted into the fan as shown in the diagram, insert into the hole, and open the fan-shaped parts on the other side.
- 4: Attach the pivot cover to the fan-shaped part on the front of the pivot, and attach the back of the pivot to the glue spot on the part A. Check that the parts can swing, and you're done!

●Envelope



<http://www.canon.com/c-park/>

Assembly Instructions

